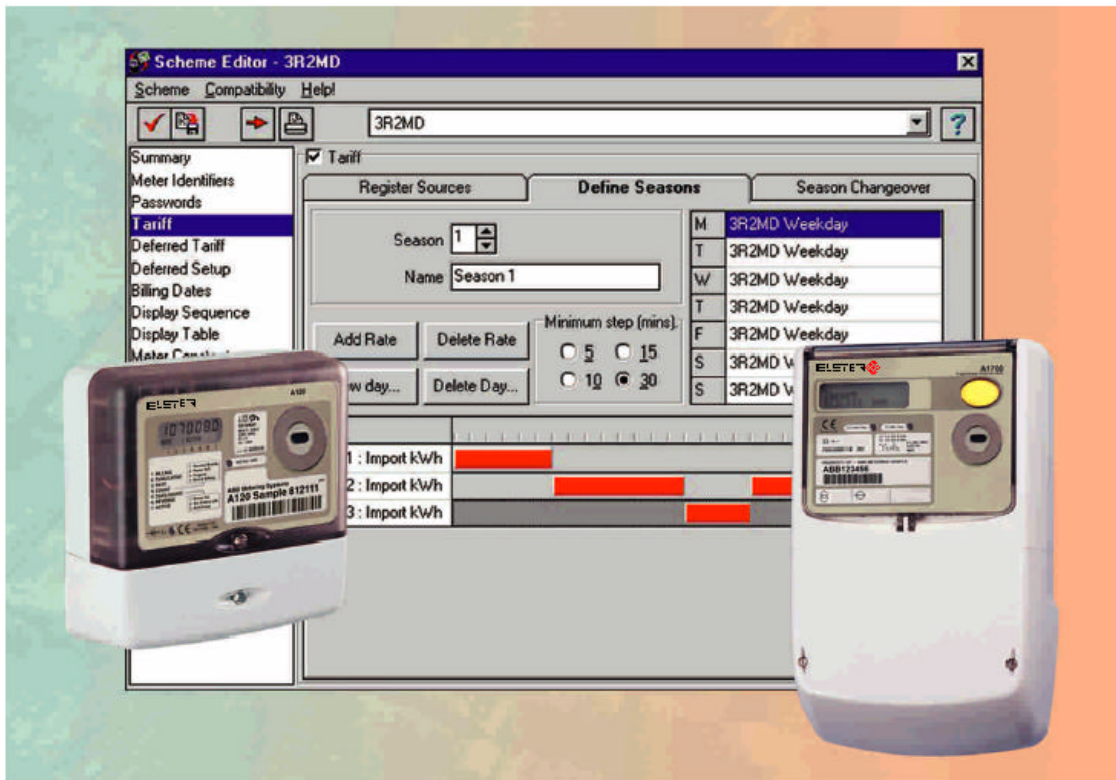


Power Master Unit Software



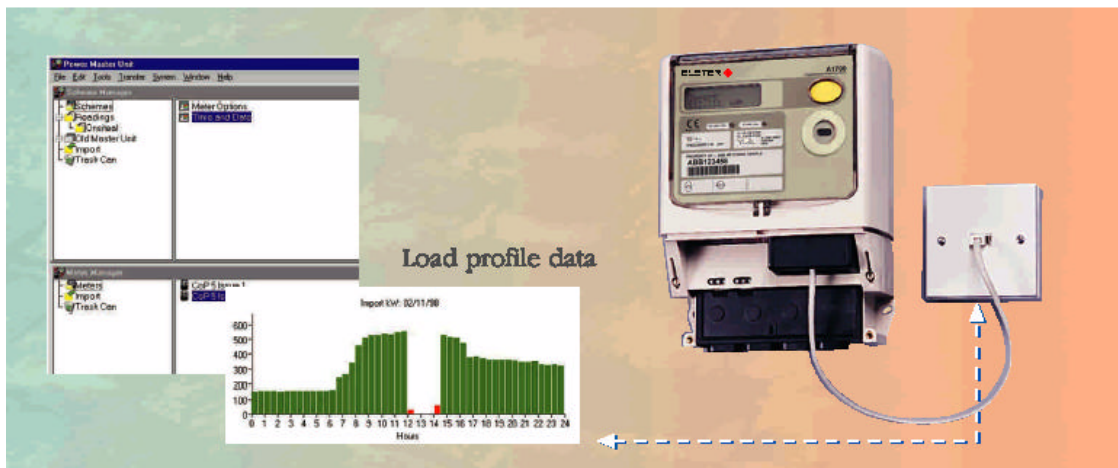
Features

- Enables local and remote reading and programming of meters
- Easy to use
- Graphical tariff scheme creation
- Compatible with all Elster Metering Systems programmable single and polyphase meters
- Load profile display facility
- Menu and toolbar driven
- Converts old Master Unit files
- Quick and simple direct communications
- Communications via PSTN or GSM modem, PAKNET, RS232, RS485 or FLAG (IEC 62056-21 formally IEC 61107)
- Enables remote diagnostics
- User password protection
- Retrieves instantaneous meter values
- On-line help
- Optional meter list scheduler

Power Master Unit Software supports Elster Metering Systems' range of programmable single and polyphase meters, providing a user-friendly, Windows™ graphical interface for programming meters and reading meter data.

The software provides three main windows comprising of a Scheme Manager, Meter Manager and Meter List. The Scheme and Meter Manager, allow schemes and information about meters to be organised hierarchically like files in Windows™ Explorer. Schemes and meter information are brought together as Meter List before transfer to the meter. Quick send mode allows changes to a meter without the requirement of identifying the particular meter or setting up a Meter List.

A variety of communications media are supported including PSTN or GSM modem, PAKNET, FLAG and RS232/ RS485. The software also programs hand held units for entering meter schemes and reading meter data at remote locations in the field.



Scheme Manager

The scheme manager allows a variety of different schemes to be entered, each scheme consisting of a particular combination of items to be programmed to or read from the meter.

A scheme can consist of an individual entry, such as a display sequence. This gives the added advantage of changing only one parameter of a group of meters with all other parameters remaining unchanged.

A scheme can be set up to read a meter's configuration, registers and data. These readings can be read in the readings viewer.

Meter Manager

The meter manager stores information about a user's meters. As a new meter is added to the system, connection, identifiers, security, hardware and communications information about the meter can be entered.

Meter List

A meter list consists of a list of meters and their associated schemes. Once defined, the meter list can be executed via any of the communication methods available. The communications server gives a clear indication of files as they are transferred.

Load Profiling

Load profile data read back from a meter can be displayed as a bar chart or report. The number of days to be read back is selectable.

If a diagnostic flag has been set during an integration period then the bar will change to red. Simply placing the mouse pointer over the bar identifies the demand recording and flags set.

Systems Administrators

Systems administration allows the administrator to create new users with their appropriate access levels. It also provides facilities for locating files for importing into the master unit and the ability to change the communications server setup.

Communications

Communications are set up within the meter manager using the meter information editor. The communications applicable to a specific meter type are selectable from PSTN or GSM modem, PAKNET, FLAG, RS232/485, CHIRPS or hand held unit. RS232/485 applications can be multi-dropped if required at speeds of up to 9600 baud.

Meter List Scheduler

The meter list scheduler is an optional Power Master Unit programming tool that allows a meter list(s) to be activated at a time scheduled by the software, allowing reading or programming to occur automatically out of office hours.



Elster Metering Systems
 Oulton Road
 Stone, Staffordshire
 ST15 0RS
 Tel: +44 (0) 1785 812111
 Fax: +44 (0) 1785 818804
 www.elstermetering.com

The company's policy is one of continuous product improvement and the right is reserved to modify the specification contained herein without notice.