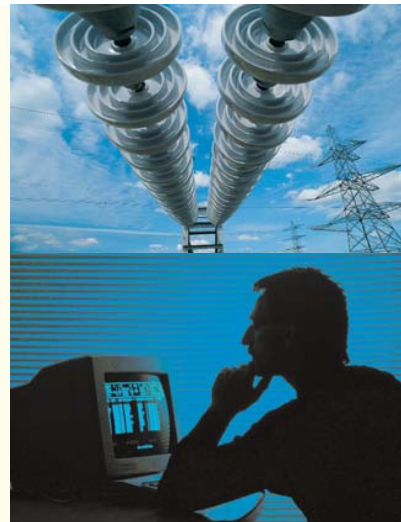
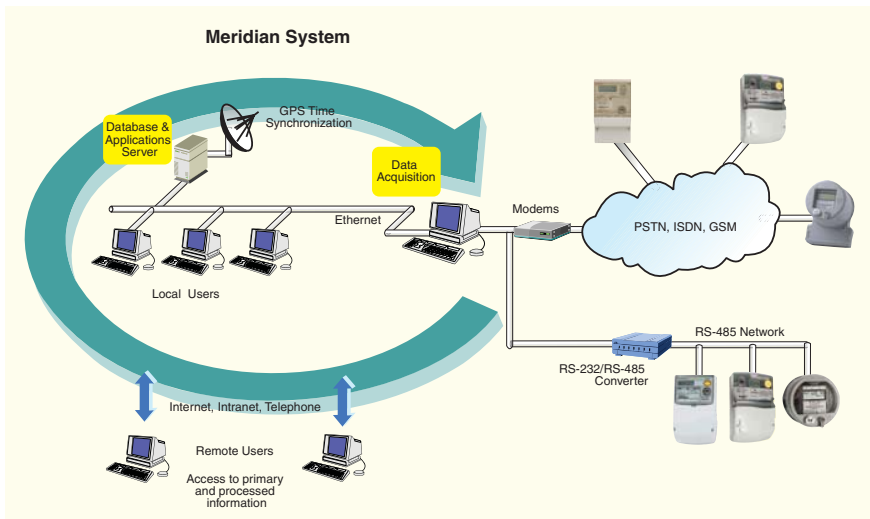


# Elster Meridian Metering Information Management System

*Access to accurate and reliable metering data is fast becoming a global requirement for both utilities and commercial and industrial operations. The Meridian System is a robust platform for meter reading, data storage and analysis that is highly flexible and user-friendly.*



## Metering Automation Made Simple

Meridian's advanced functionality allows users to automatically perform meter data acquisition, analysis and reporting, thus streamlining processes, lowering costs, ensuring consistency, and improving productivity. Data from meters can be read and consolidated into reports or summaries for analysis and forwarding to others.

By automating scheduled meter reads on a monthly, weekly, daily, or more frequent basis, resources have more time to concentrate on making decisions. Meters can be read remotely via telephone and cellular, or locally via direct-wired connections. Billing registers, interval data and power quality information can be read and stored, enabling valuable historical meter data analysis.

## Data Access Anytime, Anywhere

Today, you need access to meter data anytime and anyplace. Users with Microsoft® Internet Explorer™ can access the Meridian system directly from their company intranet, the Internet or via a dial-up connection. Information can be analyzed and results can be e-mailed.

## Easy to Use

Meridian offers a simple, menu-driven user interface and a suite of intuitive tools to configure the system, set up schedules and monitor system performance. The administration platform is integrated with a common Microsoft Windows™ Server 2003 environment.

## Speaks Your Language

Meridian adapts to your language needs allowing easy translation to many languages and displaying the date, time and numerals using your regional settings.

## Standard Platform

Meridian builds on Elster's commitment to industry standards and to supplying productive applications for our customers. The system is based on Microsoft Windows Server 2003 and a SQL Server™ 2000 database, utilizing standard PC hardware. The

system supports up to 32 communications ports for meter reading and a GPS or similar source for time synchronization of the system and its meters.

## Scalable Systems

Meridian systems consist of applications for data collection, storage and analysis. These functions can be provided on a single computer or distributed across several PC servers to meet larger or expanding system requirements. Data for meters or groups can generally be replicated to other Meridian system sites to support local, hierarchical or distributed meter information management system needs.

Whether your metering requirements are in a single location or distributed across many sites, or whether you are reading several meters or several thousands meters, Meridian supports your business needs. With its modular architecture, the system offers the flexibility to add modules as your needs evolve.

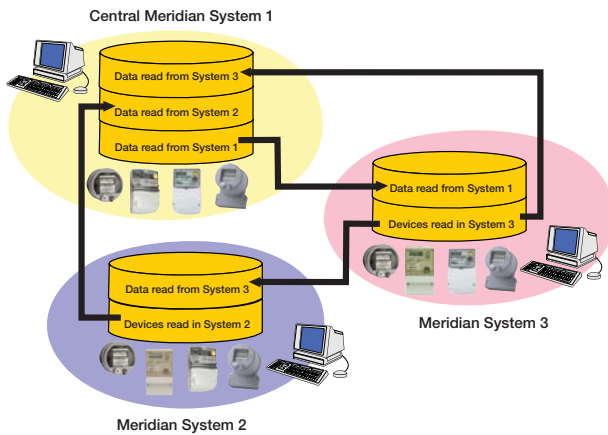
## Flexible Reporting and Analysis

In addition to a wide range of standard reports for viewing data or analyzing system operation, Meridian allows users to customize reports to meet many unique operational requirements. You can even define frequently needed reports so they are accessible from the menu.

## Data Exchange

Meridian allows data to be easily shared with other Meridian systems or utility applications. Its data replication feature saves both time and money by minimizing communications costs, increasing your access to information that is vital to decision making and providing data redundancy. Interfacing with other systems is easy, using either an export function or by simply cutting and pasting data from the many reports to Microsoft applications.

**ELSTER**



### Meridian replication features allow:

- Hierarchical systems and databases
- Local data collection option with centralized data storage
- Data exchange between systems
- Bi-directional data flows
- Selective data replication
- Scheduled or on-request data exchanges

### Documentation, Training and Online Help

Comprehensive documentation is available to guide the user through system installation, administration and operation. Should you need it, help is just a mouse click away with the on-line user and administrator guides. Training programs for users and system administrators, including installation, configuration and maintenance, are also available from Elster.

### About Elster Meters

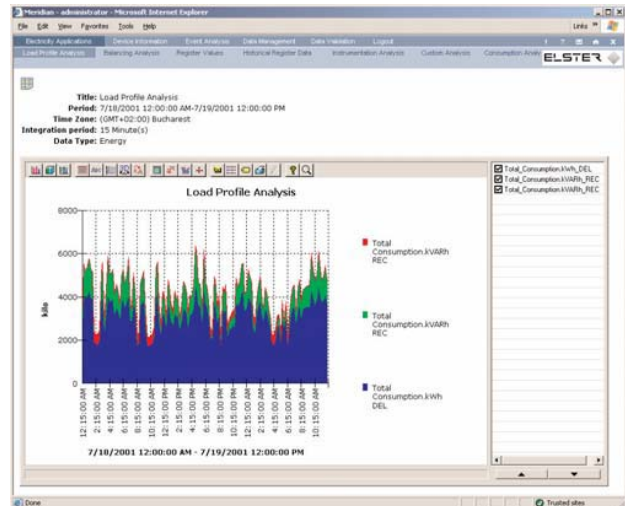
Elster offers a wide range of electricity meters designed for remote communications and metering system solutions. Meridian supports the A1 (ALPHA®), A2 (ALPHA Plus®), A3 ALPHA, A1200 ALPHA, A1350, A1500 (AEM), A1600 (AIN ALPHA), A1700 (Vision), A1800 ALPHA, A2500, D1000 (Opus5), and PPM electronic meters with RS-232, RS-485, 20 mA current loop, telephone, ISDN, and GSM 900/1800 communications. Contact your Elster Metering representative to learn more about our available meters and communications technologies.

### Analysis Tools

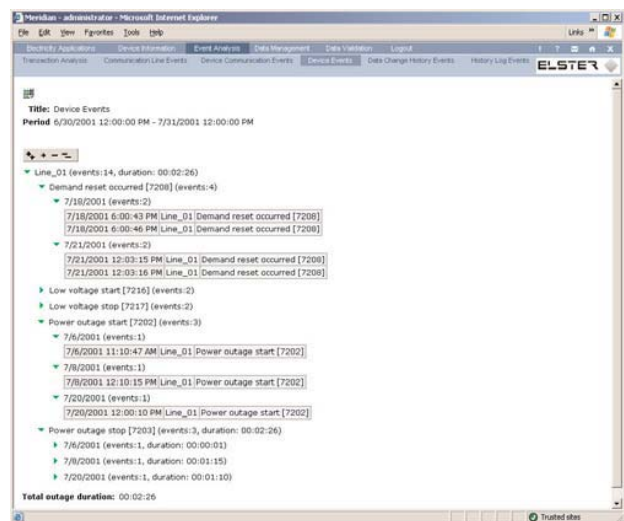
Meridian is equipped with a variety of useful tools for data analysis and system operation. All reports are HTML compatible for access via Microsoft Internet Explorer.

**Load Profile Analysis** – allows users to view interval data from one or more meters in graphical or tabular formats and identifies maximum, minimum, average, and total values.

Data can be aggregated and totaled allowing users to analyze load and power flows for substations and interconnections, to calculate net generation and losses, and to aggregate consumption for multiple plants or customer accounts with multiple meters.



**Event Analysis** – allows power quality analysis, helps document power outage frequency, and can help detect meter tampering.



**Instrumentation Analysis** – allows users to analyze instrumentation values.

**Energy Balance Analysis** – calculates import, export, internal consumption, and losses for substations, interconnections, and generation facilities.

**Diagnostic Reports** – display meter status from the last read to aid in diagnostics, help investigate possible communication problems, and document communication volume and success rates.



Meridian@us.elster.com  
www.elstermetering.com

© 2005 by Elster Metering Ltd. All rights reserved. Information herein is subject to change without notice. Product specifications cited are those in effect at the time of publication. Printed in the United States. Rev. A. August 2005.