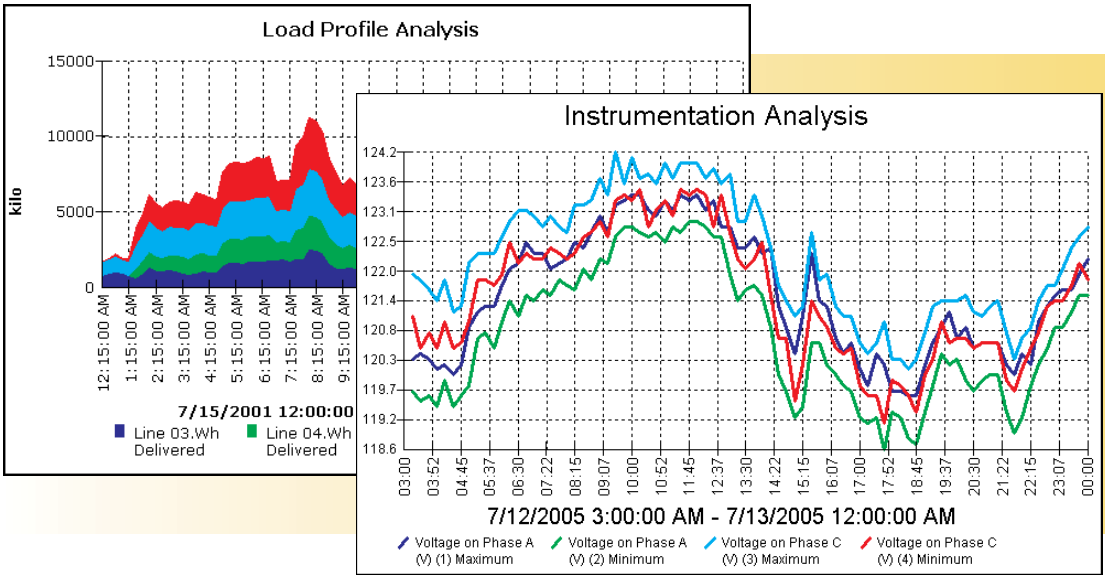


# Meridian Analysis Tool (Meridian-AT)



## Graphical Analysis Tool

Meridian Analysis Tool (Meridian-AT) is a Windows-based application that allows you to import and graph both interval data and instrumentation data that has been read from Elster Electricity meters. Use Meridian-AT to easily import diagnostic read and billing read files that have been generated by Elster Electricity meter support software. Extensive tools and options in Meridian-AT make it easy to chart and analyze the data.

## Data Import

Meridian-AT can import load profile data or instrumentation data (or both) from the following Elster meter support software programs:

- AlphaPlus files for ALPHA (A1), ALPHA Plus (A1+), and AIN ALPHA (A1600) meters
- Metercat files for A3 ALPHA and A1800 ALPHA meters

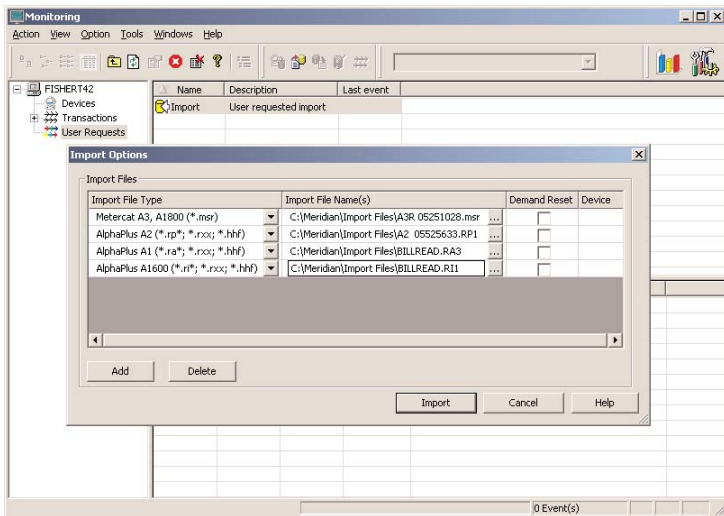
Multiple files can be imported simultaneously.

## Load Profile Analysis

Meridian-AT allows you to analyze interval data:

- for one or more meters
- from one or more meter readings
- for one or more meter channels
- as energy or demand values
- in meter interval or integrated data form
- in table format identifying the minimum, maximum, calculated average, and calculated total values
- in graphical format to help users visualize trends

Date/Time	Line_03	Line_04
	Wh_Delivered	Wh_Delivered
	kWh	kWh
7/15/2001 1:00:00 PM	6,864.0	6,369.0
7/15/2001 2:00:00 PM	7,062.0	6,237.0
7/15/2001 3:00:00 PM	6,732.0	6,072.0
7/15/2001 4:00:00 PM	7,722.0	6,270.0
7/15/2001 5:00:00 PM	8,877.0	6,303.0
7/15/2001 6:00:00 PM	6,435.0	5,478.0
7/15/2001 7:00:00 PM	7,293.0	5,874.0
7/15/2001 8:00:00 PM	8,448.0	6,732.0
7/15/2001 9:00:00 PM	6,699.0	6,171.0
7/15/2001 10:00:00 PM	7,161.0	6,270.0
7/15/2001 11:00:00 PM	4,917.0	5,016.0
7/16/2001 12:00:00 AM	4,851.0	4,917.0
Minimum	7/16/2001 12:00:00 AM	7/16/2001 12:00:00 AM
Average	6,921.8	5,975.8
Maximum	8,877.0	6,732.0
	7/15/2001 5:00:00 PM	7/15/2001 8:00:00 PM
Total	83,061.0	71,709.0



Technology to Empower Utilities



## Instrumentation Analysis

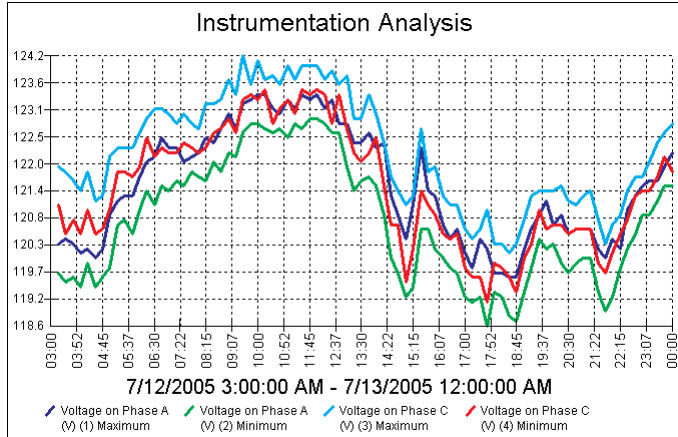
Meridian-AT allows you to analyze the instrumentation profile data stored in A3 ALPHA and A1800 ALPHA meters. You can view such items as:

- system frequency
- power factor
- current and voltage on a per phase basis
- power (active, reactive, or apparent) based on total or per phase measurements

## Data Presentation

Meridian-AT allows you to easily change between tabular and graphical formats when viewing data. You can also easily copy and paste data into other Windows applications, such as Microsoft Excel or Microsoft PowerPoint.

Date/Time	Voltage on Phase A (V) (1) Maximum	Voltage on Phase A (V) (2) Minimum	Voltage on Phase C (V) (3) Maximum
7/12/2005 6:15:00 AM	122.0	121.4	122.9
7/12/2005 6:30:00 AM	122.1	121.1	123.1
7/12/2005 6:45:00 AM	122.5	121.5	123.1
7/12/2005 7:00:00 AM	122.3	121.4	123.0
7/12/2005 7:15:00 AM	122.3	121.6	122.8
7/12/2005 7:30:00 AM	122.0	121.5	123.0
7/12/2005 7:45:00 AM	122.1	121.8	122.8
7/12/2005 8:00:00 AM	122.2	121.7	122.7
7/12/2005 8:15:00 AM	122.5	121.6	123.2
7/12/2005 8:30:00 AM	122.4	122.0	123.2
7/12/2005 8:45:00 AM	122.7	121.8	123.3
7/12/2005 9:00:00 AM	123.0	122.2	123.7
7/12/2005 9:15:00 AM	122.7	122.1	123.4
7/12/2005 9:30:00 AM	123.2	122.6	124.2
7/12/2005 9:45:00 AM	123.3	122.8	123.6
7/12/2005 10:00:00 AM	123.4	122.8	124.1
<b>Maximum</b>	7/12/2005 10:00:00 AM	7/12/2005 10:00:00 AM	7/12/2005 9:30:00 AM
<b>Minimum</b>	7/12/2005 7:30:00 AM	7/12/2005 6:30:00 AM	7/12/2005 8:00:00 AM
<b>Average</b>	122.5	121.9	123.2



## Data Storage

Meridian-AT provides temporary data storage for analyzing data from multiple meters or from multiple meter readings. Since storage is only temporary, neither expensive database licenses nor database maintenance are required.

## Documentation and Online Help

Meridian-AT includes comprehensive documentation to guide the user through system installation and operation. Should you need it, online Help is also available.

## System Requirements

Meridian-AT has the following minimum system requirements:

- Intel Pentium or compatible 166 MHz or higher processor
- Operating system: Windows 2000 Professional, Windows XP Professional, Windows 2000 Server, or Windows Server 2003
- Memory: 128 MB for Windows XP or Windows 2003 Server; 64 MB for Windows 2000
- A hard disk with at least 100 MB free space
- A CD ROM drive (or network access to the installation CD)
- A monitor that supports a minimum resolution of 800 × 600 pixels and small font size display
- Microsoft Internet Explorer



**Elster Electricity, LLC**  
 Raleigh, North Carolina, USA  
 +1 800 338 5251 (US toll free)  
 +1 905 634 4895 (Canada)  
 support@us.elster.com  
 www.elsterelectricity.com

© 2006 by Elster Electricity, LLC. All rights reserved. Information herein is subject to change without notice. Product specifications cited are those in effect at the time of publication. Printed in the United States. Rev. A. January 2006.

ALPHA, ALPHA Plus, AlphaPlus, and Metercat are trademarks and/or registered trademarks of Elster Electricity, LLC. Other products may be trademarks and/or registered trademarks of their respective companies.